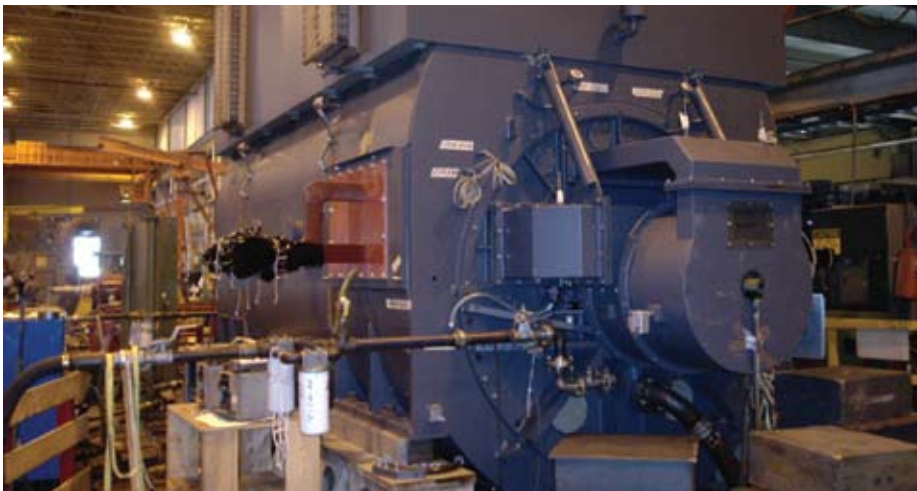


A comprehensive factory testing schedule is carried out on all generators to ensure further enhanced reliability. Full load current and voltage testing is included.



All generators are fully assembled with their own bearings and vibration probes. Testing is performed at rated speed and voltage as required using a shop driver and lube oil system. Vibration probes are monitored continuously using a data acquisition system. Temperatures and pressures are monitored as well, including lube oil, bearing metal, and cooling air/water. Tests are specified in IEEE C50.13 and Converteam standards and performed by methods in IEEE 115.

Test	All Machines	Optional
Resistance of armature and field windings	X	
Dielectric test of armature and field windings	X	
Voltage balance	X	
Phase sequence	X	
Mechanical balance (vibration)	X	
Open circuit saturation curve	X	
Overspeed	X	
Rotor impedance	X	
Measurement of insulation resistance of armature and field windings	X	
Shorted field turns check	X	
Accessories/detectors test	X	
Polarization index	X	
Bearing inspection	X	
Exciter operation	X	
Measurement of bearing insulation resistance	X	
Short circuit saturation curve		X
Harmonic analysis and measurement of TIF		X
Heat runs		X
Short circuit tests at reduced voltage to determine reactances and time constants		X
Measurement of segregated losses		X
Noise test		X



Converteam Electric Machinery
800 Central Avenue NE
Minneapolis, Minnesota 55413
United States
Tel: +1 612 378 8000
Fax: +1 612 378 8051

North America Headquarters:
Converteam Inc.
Pittsburgh, Pennsylvania
Tel: +1 412 967 0765

France Tel: +33 1 77 31 20 00
Germany Tel: +49 30 76 22 0
UK Tel: +44 1788 563563
Brazil Tel: +55 31 3330 5800
China Tel: +86 21 6442 1666
India Tel: +91 44 2440 0900
Russia Tel: +7 495 225 1916