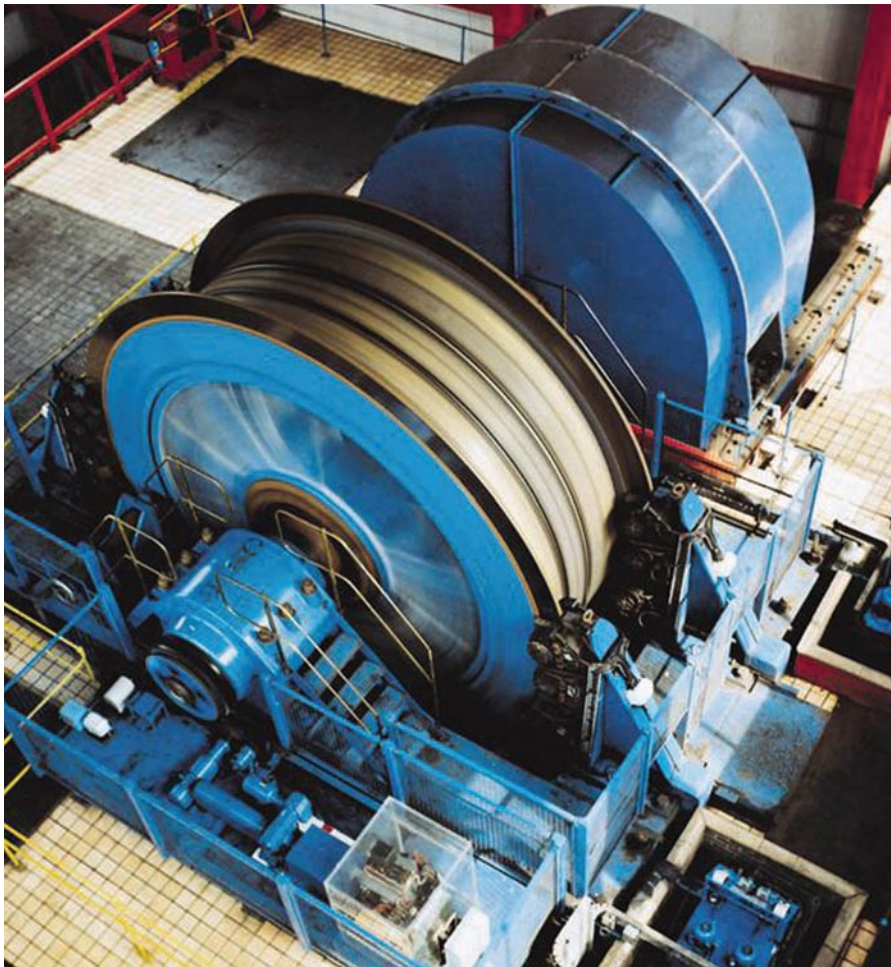


Based on a pedigree spanning 100 years, Converteam is the best choice for power and control systems in the world of mining. Since the 1970's, Converteam has continued to build on its pedigree with more than 500 major references in the mining industry.



A coordinated global presence, Converteam combines special skills in its people and products to provide:

- Electrical engineering
- Process knowledge
- System design
- Project management

The company's long association with the mining industry enables it to apply its skills and products in areas such as:

- Mine winders
- Haulages
- Mine ventilation systems
- Milling drives
- Conveyor systems

Converteam's engineering skills and service operations enable it to undertake winder rating calculations, feasibility studies, modernisation of control systems, winder transfers, site inspections and services.

Converteam UK Ltd  
Boughton Rd, Rugby  
Warwickshire CV21 1BU  
United Kingdom  
Tel: +44 (0)1788 563563  
Fax: +44 (0)1788 560767  
sales@converteam.com

France Tel: +33 1 64 53 83 00  
Germany Tel: +49 30 76 22 0  
USA Tel: +1 412 967 0765  
Brazil Tel: +55 31 3330 5800  
China Tel: +86 21 6442 1666  
India Tel: +91 44 2440 0900  
Russia Tel: +7 495 225 1916

## Key Facts

1894	First ever electrical winder
1972	First electrically coupled winder
1974	Largest winder in the world
1982	First ever integrated winder
1995	Deepest mine winder in the world
1998	World's first integrated friction winder with induction motor

Germany  
South Africa  
South Africa  
Germany  
South Africa  
Australia