

Compass Minerals of Overland Park, Kansas, USA, has selected a consortium partnership of Converteam and Siemag M-TEC2 for a major upgrade project at its Sifto Canada Corp. salt mine in Goderich, Ontario, Canada.



Germany. The major mechanical components will be delivered by consortium partner Siemag M-TEC2. Full responsibility of the design, manufacture, testing and delivery of the new equipment and systems is with both consortium partners; Converteam and Siemag M-TEC2.

Converteam opted to propose an induction motor solution with inherent advantages of favorable first cost and, perhaps more significantly, reduced through life maintenance and costs.

Converteam. Experience and Innovation

Converteam, a leading player in the design and supply of electrical systems for mining applications for in excess of 100 years with the first ever electrical mine winder being delivered in 1894.

With over 500 references in the mining industry Converteam has an enviable level of experience which, together with world leading products and services makes us a leading supplier in the field.

Converteam offers a coordinated global presence combining skilled personnel and innovative, reliable products.

These skills and products are applied within the mining industry in areas such as:

- Winders
- Haulages
- Mine ventilation systems
- Milling drives
- Conveyor systems

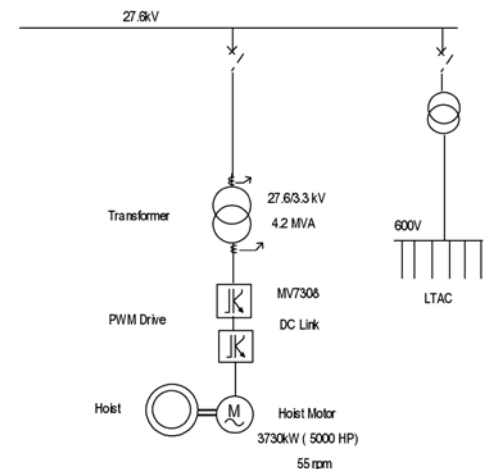
We offer the most complete level of expertise which extends to further key skills such as winder rating calculations, feasibility studies, modernization of control systems, winder transfers, site inspections and services.

Engineering for Reliability and Efficiency

The Goderich mine, the largest underground salt mine in the world, has been in production continuously since 1959.

The project to overhaul and upgrade the mine's existing number three shaft will see increased productivity and efficiency. When completed the new double drum hoist will have the capability to lift substantially larger skips than currently employed at the mine and the mine's capacity will increase from its present 7.25 million tons to approximately 9 million tons per annum.

Converteam Canada Inc, based in Burlington, Ontario is leading the project on behalf of Converteam and will supply key electrical components including transformers and LV panels while the 5000HP (3730kW) overhung induction motor and the control/monitoring systems will come from Converteam in Rugby, UK and the MV7000 PWM drive will be produced by Converteam in Berlin,



Converteam Scope of Supply

- 4.2 MVA HV Transformer
- MV7308 AFE PWM Drive
- 3730kW (5000 HP), 55 rpm overhung induction motor with spare stator
- Motor cooling fan unit
- 600V motor control center
- Control PLC
- Seated control desk with HMI
- Data logging
- Electronic speed and distance protection monitor
- Safety system
- Multi channel braking system
- Hoist encoders
- Sensors (shaft switches etc)

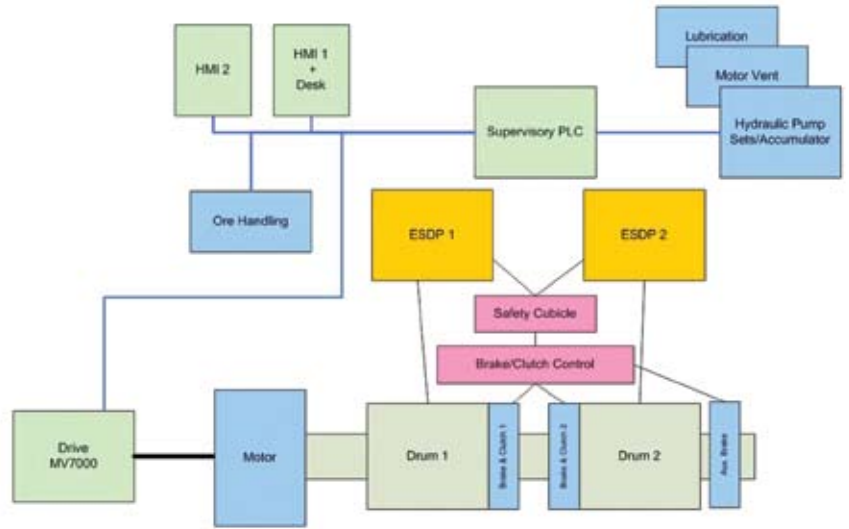
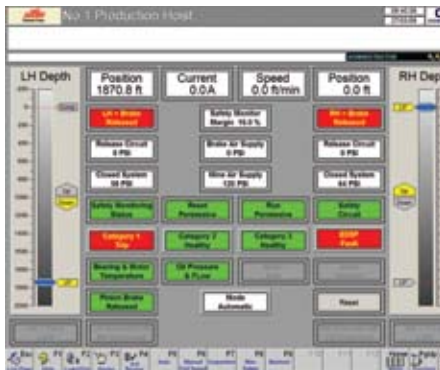
Automation, Control and Monitoring

Converteam's delivery also extends to a comprehensive automation, control and monitoring package with customized functions which include electronic speed and distance protection, closed loop brake control and comprehensive data logging facilities.

This system is configured with a central operator control station and a supervisory computer providing full access for production personnel as well as for maintenance and supervisory functions.

The 'Extra' Bit

Converteam is proud to be an engineering company which provides comprehensive solutions to the mining industry.



Our extensive experience ensures that we have the right solutions available and that we understand that this business is about more than just supplying products.

At Converteam our "extra" ingredient is engineering, in all its forms. When we talk about engineering we use the term to include a diverse range of skills; mechanical engineers, electrical engineers, electronic engineers, control system engineers, power system engineers, mathematicians and project engineers to name but a few.

This diversity of in house engineering skills and experience, our project management skills, our comprehensive range of products and the relationships which we develop with our customers, partners and key suppliers means that we deliver an engineered entity in which interfaces and supplier responsibilities are established from the outset of a project.

Completing the comprehensive line up are full, global service facilities and extensive training capability.

Our investment in our service and support organization is just one more way in which Converteam demonstrates a commitment and understanding of the needs of the industry.

The Converteam Service organization offers comprehensive support during the product lifecycle phases including spares and repairs, training, routine service contracts, 24/7 breakdown support, upgrade and enhancement projects.

Converteam has developed an attitude to customer service that goes beyond just waiting for their call. Our philosophy is to be proactive in providing a service and support function which recognizes the varying needs of the business.

Converteam Canada Inc.
845 Harrington Court
Burlington, Ontario L7N 3P3
Canada
Tel: +1 905 333 3667
Fax: +1 905 333 4941

North America Headquarters:
Converteam Inc.
Pittsburgh, Pennsylvania
Tel: +1 412 967 0675

France	Tel: +33 1 77 31 20 00
Germany	Tel: +49 30 76 22 0
UK	Tel: +44 1788 563563
Brazil	Tel: +55 31 3330 5800
China	Tel: +86 21 6442 1666
India	Tel: +91 44 2440 0900
Russia	Tel: +7 495 225 1916